



**TECHNICAL ADVISORY**

**DIVISION OF MOTORIST SERVICES**

<b>DATE: April 10, 2018</b>	<b>Technical Advisory RS/TL18-009</b>
<b>SUBJECT: Garage Liability Insurance and Dealer Plates Update</b>	

**Overview:**

Changes for updating dealer garage liability insurance policy information and the issuance of dealer plates will be deployed to pilot sites on Friday, April 13, 2018 and statewide on Friday, April 27, 2018.

Insurance companies are required to submit the maximum number of dealer plates allowed per garage liability insurance (GLI) policy. This limit will be entered in FRVIS and will prevent the dealer from purchasing or renewing more dealer plates than the GLI policy allows. If a dealer increases GLI coverage to include additional plates, they must provide this information to the Bureau of Dealer Services office in their region to be updated. Once this is completed, they can apply for the additional plates at the tax collector or license plate agency.

**Details:**

New fields have been added in FRVIS to reflect the maximum number of dealer plates allowed under each dealer’s garage liability insurance policy and the number of current active dealer plates associated with each dealer. These fields are viewable on MTRFM103 – Original Dealer/Transporter Registration, MDLFM002 – Maintain Insurance Policy, and MTRFM108 – Renew Dealer Registration.

MDLFM002 - Maintain Insurance Policy

LICENSE INFORMATION  
 LICENSE TYPE/NUMBER: VF / 1001169 POLICY NUMBER: 2483937 >>  
 LICENSEE NAME: GETTEL ENTERPRISES, INC

DOING BUSINESS AS: FL ETR TOYOTA  
 GATORLAND ACURA

INSURANCE COMPANY  
 CUSTOMER NUMBER: 218286412 >> SENTRY SELECT INSURANCE COMPANY

AGENCY NAME  
 CUSTOMER NUMBER: 219984207 >> SENTRY SELECT INSURANCE COMPANY  
 AGENT FIRST NAME: MIDDLE NAME: LAST NAME:

INSURANCE INFORMATION  
 POLICY NUMBER: 2483937 NON RENEWAL FLAG:  LIABILITY AMOUNT  
 EFFECTIVE DATE: 01/01/2017 EXPIRATION DATE: 12/31/2017 CANCELLATION DATE:  
 DEALER PLATES ALLOWED: 5 ACTIVE DLR PLATES: 0

CLEAR POLICY DATA COMPLETE

MTRFM108 - RENEW DEALER REGISTRATION

REG TYPE DEALER REGISTRATION  
 FEID/DL NUMB. 650458896 1 >> GETTEL ENTERPRISES, INC  
 DLR TYPE/NUM/SFX VF / 1001169 1 DLR PIN CHANGE REGISTRANT

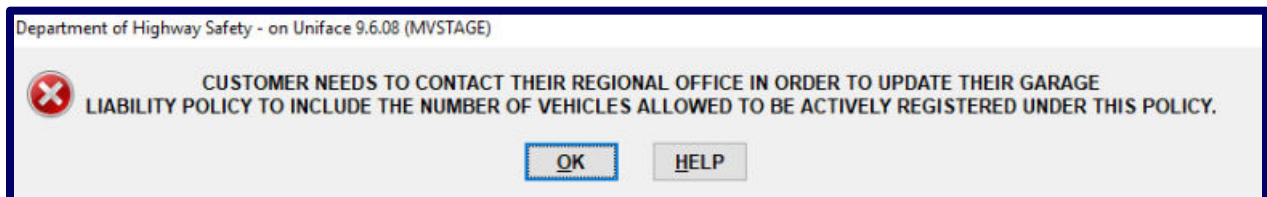
MAX # DLR PLATES ACTIVE DLR PLATES

LIC PLATE CODE DLR >> DEALER LICENSE PLATE  
 EFF. DATE EXP. DATE  
 TAX MONTHS BACK TAX CANC. DATE  
 VEH CLASS 071 DEALER PLATES VESSEL REG

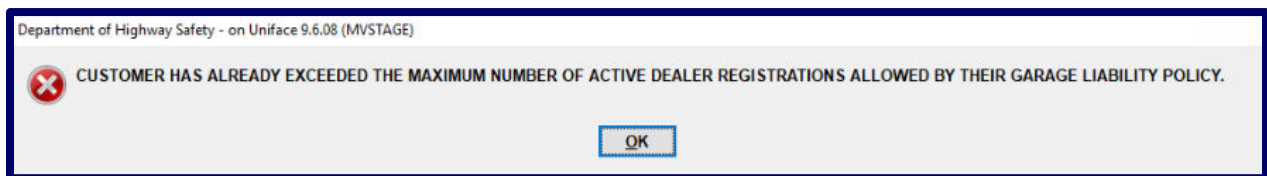
LIAB INS TYP  
 INSURANCE TYPE  
 INSURANCE COMPANY  
 INSURANCE NUM  
 INSURANCE STATUS

REPLACE LP ?  LIC PLT NUM NA233H DECAL NUM  
 REPL REASON >>  
 COMMENT DESC. FEES

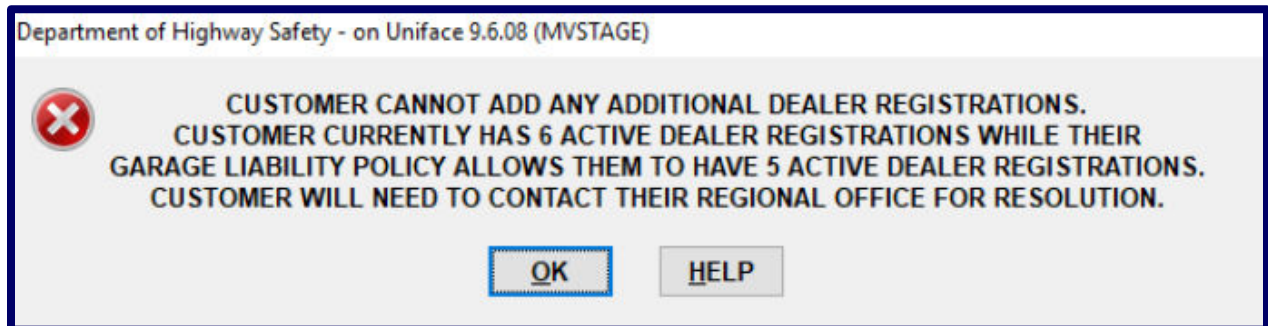
The maximum number of dealer plates allowed will default to null until updated by dealer licensing. Until the maximum number of dealer plates allowed per garage liability insurance policy is updated, dealers will not be able to be issued new or renew existing plates and the following error message will be returned.



Additionally, once the maximum number of dealer plates is updated on the FRVIS menu option of Garage Liability Insurance, and the Maintain Insurance Policy screen and if the number of active plates exceeds the maximum currently held by the dealer, the following warning message will be returned.



Dealers will not be issued new dealer plates or renew existing plates until current dealer plates over the maximum limit are surrendered and cancelled. If issuances or renewals are attempted, the following error message will be returned.



If you have questions, please contact your next level of management or the Field Support Center.